

Void no determination made 76
to actual corner

N.W. Cor. Sec. 21-T 32-R 23

Set Cast Iron Monument Flush

From Resurvey

May 20, 1963

J. Olivier
M. D. Anderson

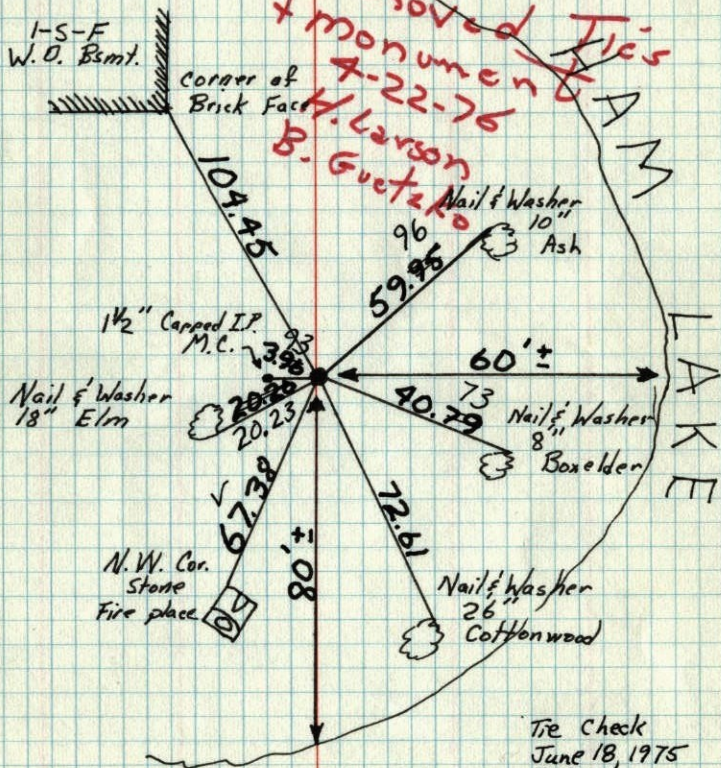
I-S-F
W.O. Bsm't.

Corner of
Brick Face

Tie Check
June 4, 1971

R. Brien
J. Baettcher

Removed Ties
+ monument
4-22-76
H. Larson
B. Guetzko



Tie Check
June 18, 1975
D. Dahl
B. Sannerud
G. Adams

TEMPERATURE CORRECTED
AND HORIZONTALLY
TAPED MEASUREMENTS

ROLAND W. ANDERSON
COUNTY SURVEYOR
ANOKA COUNTY, MINNESOTA

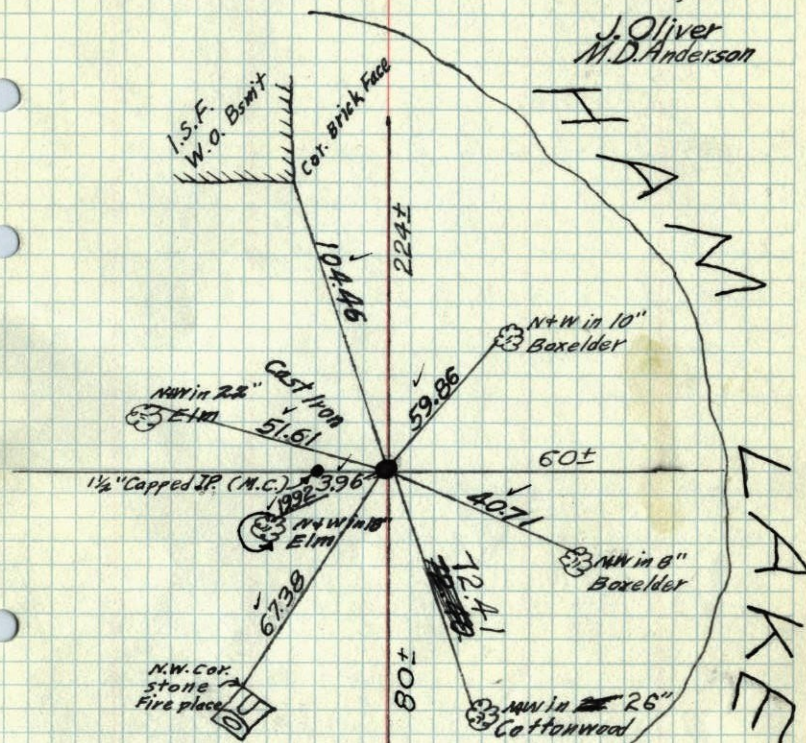
473

N.W. Cor. Sec. 21, T. 32, R. 23

Set Cast Iron Monument Flush From
Resurvey

20 May 63

J. Olivier
M. D. Anderson



TEMPERATURE CORRECTED
AND HORIZONTALLY
TAPED MEASUREMENTS

Retie 7/13/64

M. D. Anderson
R. Carlson

Tie Check
Aug. 11, 1966
H. Larson
D. Potter
G. Reimer

ROLAND W. ANDERSON
COUNTY SURVEYOR
ANOKA COUNTY, MINNESOTA

NW Cor. Sec. 21, T32, R23

Set Cast Iron Monument Flush from
Resurvey

